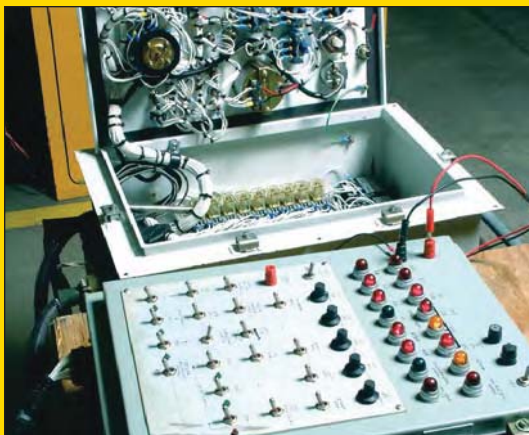


CONTROLS (INDUSTRIAL AND AUTOMOTIVE) (INSTRUMENT PANELS, JUNCTION BOXES, CONTROL PANELS)

Controls Division—Automotive & Industrial Assemblies

Julian Electric's Controls Division supports all wire harness customers with their top-level assembly and kitting needs. OEM's can procure their complete electrical package from one source with custom test fixtures inspecting the complete assembly.



Top-level assembly and testing capabilities including 100% of console/instrument panel/control box assembly requirements for many customers.

Industrial Control Assemblies under Julian UL file #E59075

